



TFT- LCD  
PRODUCT

SPEC. TITLE  
ZY121VGXN20C-200 Product Specification

PAGE  
1 OF 27

ZY121VGXN20C-200  
Product Specification Rev.P

ITEM BUYER SIGNATURE DATE

\_\_\_\_\_

\_\_\_\_\_

\_\_\_\_\_

ITEM SUPPLIER SIGNATURE DATE

Prepared \_\_\_\_\_

Reviewed \_\_\_\_\_

Approved \_\_\_\_\_

[illegible]

|                     |   |     |                 |
|---------------------|---|-----|-----------------|
|                     |   | REV | ISSUE DATE      |
|                     |   | P   | 2024.01.18      |
| TFT- LCD<br>PRODUCT | SPEC. TITLE<br>ZY121VGXN20C-200 Product Specification |     | PAGE<br>3 OF 27 |

Contents

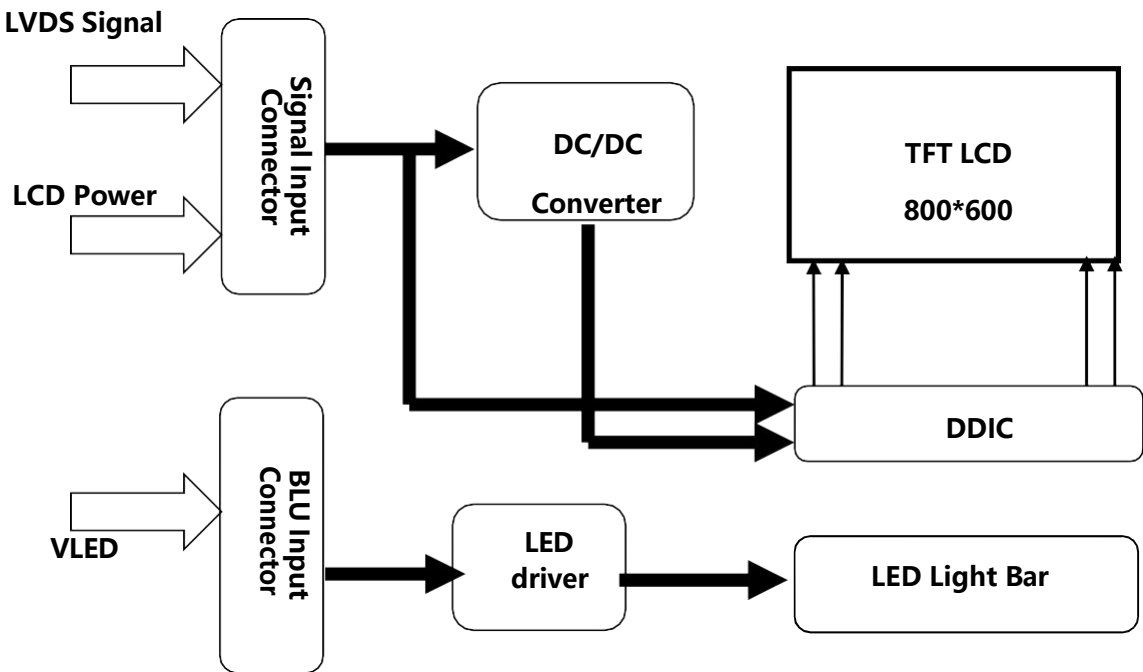
| No. | Items                     | Page |
|-----|---------------------------|------|
| 1.0 | General Description       | 4    |
| 2.0 | Absolute Maximum Ratings  | 6    |
| 3.0 | Electrical Specifications | 7    |
| 4.0 | Optical Specifications    | 16   |
| 5.0 | Reliability Test          | 21   |
| 6.0 | Packing Information       | 22   |
| 7.0 | Handling & Cautions       | 23   |
| 8.0 | Mechanical Specification  | 26   |
|     |                           |      |

|                     |   |     |                 |
|---------------------|---|-----|-----------------|
|                     |   | REV | ISSUE DATE      |
|                     |   | P   | 2024.01.18      |
| TFT- LCD<br>PRODUCT | SPEC. TITLE<br>ZY121VGXN20C-200 Product Specification |     | PAGE<br>4 OF 27 |

# 1.0 GENERAL DESCRIPTION

## 1.1 Introduction

ZY121VGXN20C-200 is a color active matrix TFT LCD module using amorphous silicon TFT 's (Thin Film Transistors) as an active switching devices. This module has a 12.1 inch diagonally measured active area with SVGA resolutions (800 horizontal by 600 vertical pixel array). Each pixel is divided into RED, GREEN, BLUE dots which are arranged in vertical stripe and this module can display 16.7M colors.



## 1.2 Features

- 0.5T Glass (Single) ;
- Module Design
- 6/ 8bits LVDS data input selection
- Thin and light weight
- High luminance and contrast ratio, low reflection and wide viewing angle
- RoHS compliant

|  |   | REV    | ISSUE DATE      |
|--|---|--------|-----------------|
|  |   | P      | 2024.01.18      |
| TFT- LCD<br>PRODUCT  | SPEC. TITLE<br>ZY121VGXN20C-200 Product Specification |        | PAGE<br>5 OF 27 |
| <b>1.3 Application</b> <ul style="list-style-type: none"><li>● Medical Monitor</li></ul>   |   |        |                 |
| <b>1.4 General Specification</b> <p>The followings are general specifications</p> <p style="text-align: center;"><b>&lt;Table 1. LCD Module Specifications&gt;</b></p> |   |        |                 |
| Parameter  | Specification   | Unit   | Remarks         |
| Active Area  | 246(H)*184.5(V)                                       | mm     |                 |
| Number Of Pixels   | 800(H)×600(V)   | pixels |                 |
| Pixel Pitch  | 0.3075(H)×RGB×0.3075(V)                               | mm     |                 |
| Pixel Arrangement  | Pixels RGB stripe arrangement                         |        |                 |
| Display Mode   | Normally White  |        |                 |
| Display Colors   | 16.7M   | colors |                 |
| Display Mode   | Transmissive mode                                     |        |                 |
| Surface Treatment  | AG25 (CF) , Clear (TFT)                               |        |                 |
| Contrast Ratio   | 800:1(typ.)   |        |                 |
| Viewing Angle(CR> 10)  | 80/80/65/75(typ.)                                     | deg.   |                 |
| Response Time  | 30(typ.)  | ms     |                 |
| Color Gamut  | 55%   |        |                 |
| Brightness   | 300(min)/350(typ)                                     | cd/m2  |                 |
| Brightness Uniformity  | 9 point: min 70%<br>9 point: typ 80%                  |        |                 |
| Power Consumption  | 4.44 W(Max.)  | watt   |                 |
| Outline Dimension  | 279(H)*209(V)*9.0(typ)                                | mm     |                 |
| Weight   | TBD (MAX)   | gram   |                 |
|  |   |        |                 |

|                     |   |        |                 |
|---------------------|---|--------|-----------------|
|                     |   | REV P1 | ISSUE DATE      |
|                     |   | P      | 2024.01.18      |
| TFT- LCD<br>PRODUCT | SPEC. TITLE<br>ZY121VGXN20C-200 Product Specification |        | PAGE<br>6 OF 27 |

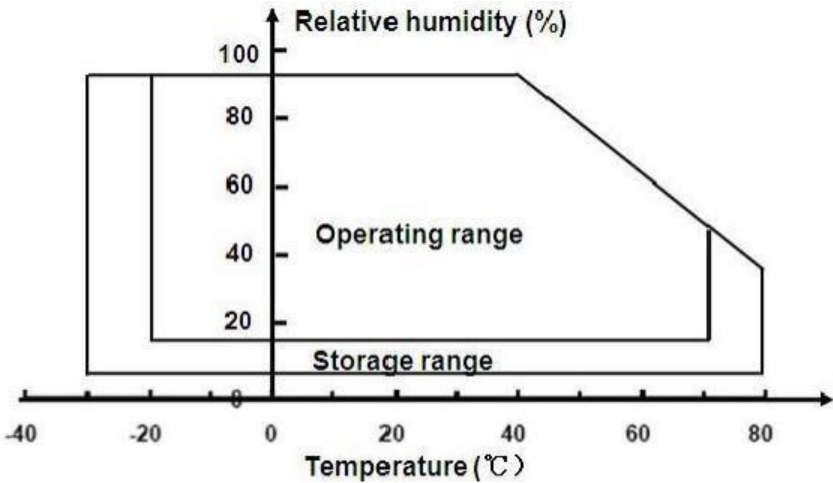
2.0 ABSOLUTE MAXIMUM RATINGS

The followings are maximum values which, if exceed, may cause faulty operation or damage to the unit. The operational and non-operationalmaximum voltage and current values are listed in Table 2.

< Table 3. Absolute Maximum Ratings>

| Parameter             |            | Symbol          | Min.    | Max. | Unit | Remarks    |
|-----------------------|------------|-----------------|---------|------|------|------------|
| Power Supply          | LCD Module | VCC             | VSS-0.3 | 3.9  | V    | Ta = 25 °C |
| Operating Temperature |            | T <sub>OP</sub> | -20     | +70  | °C   | Note 1     |
| Storage Temperature   |            | T <sub>ST</sub> | -30     | +80  | °C   |            |

Note : 1) Temperature and relative humidity range are shown in the figure below.  
Wet bulb temperature should be 39 °C max. and no condensation of water.



|                     |   |        |                 |
|---------------------|---|--------|-----------------|
|                     |   | REV P1 | ISSUE DATE      |
|                     |   | P      | 2024.01.18      |
| TFT- LCD<br>PRODUCT | SPEC. TITLE<br>ZY121VGXN20C-200 Product Specification |        | PAGE<br>7 OF 27 |

### 3.0 ELECTRICAL SPECIFICATIONS

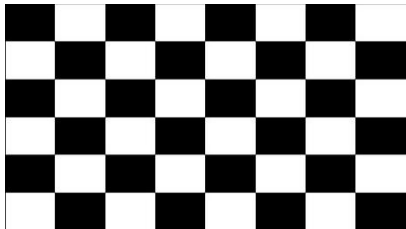
#### 3.1 TFT LCD Module

< Table 4. LCD Module Electrical specifications > [Ta=25±2 °C]

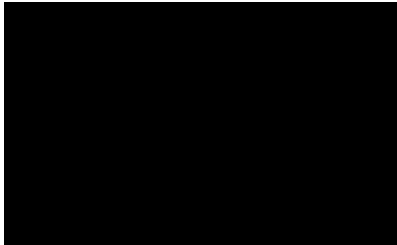
| Parameter            | Symbol | Values |       |       | Unit | Notes |
|----------------------|--------|--------|-------|-------|------|-------|
|                      |        | Min.   | Typ.  | Max.  |      |       |
| Power Supply Voltage | VDD    | 3.0    | 3.3   | 3.6   | V    |       |
| Power Supply Current | IDD    | 90.63  | 122.4 | 153.4 | mA   |       |
| Power Consumption    | PLCD   | 0.299  | 0.403 | 0.506 | W    | TBD   |
|                      |        |        |       |       |      |       |

Notes : 1. The supply voltage is measured and specified at the interface connector of LCM.  
The current draw and power consumption specified is for VDD=3.3V, Frame rate f<sub>v</sub>=60Hz and Clock frequency = 33MHz. Test Pattern of power supply current

a) Typ : Mosaic 8 x 6 Pattern(L0/L255)



b) Max : black



2. The duration of rush current is about 2ms and rising time of Power Input is 1ms(min)

|                     |   |        |                 |
|---------------------|---|--------|-----------------|
|                     |   | REV P1 | ISSUE DATE      |
|                     |   | P      | 2024.01.18      |
| TFT- LCD<br>PRODUCT | SPEC. TITLE<br>ZY121VGXN20C-200 Product Specification |        | PAGE<br>8 OF 27 |

3.2 Back-Light Unit

Table 4. LED Dirver Electrical Specifications > [Ta =25±2 °C]

| Parameter           |            | Symbol           | Values |      |      | Unit | Notes    |
|---------------------|------------|------------------|--------|------|------|------|----------|
|                     |            |                  | Min.   | Typ. | Max. |      |          |
| BLUSupplyVoltage    |            | VDD              | /      | 12   | /    | V    |          |
| BLU Forward Current |            | I <sub>VDD</sub> | /      | /    | /    | mA   |          |
| Power Consumption   |            | P <sub>LED</sub> | -      | 3.24 | 3.56 | W    | Note 1   |
| BLU BRTC Level      |            | BLU ON           | 3.0    | 3.3  | 3.6  | V    |          |
|                     |            | BLU OFF          | 0      |      | 0.5  | V    |          |
| PWMIN               | Level      | High Level       | 1.9    | -    | -    | V    |          |
|                     |            | Low Level        | 0      | -    | 0.8  | V    |          |
|                     | Frequency  | F <sub>PWM</sub> | 200    | -    | 20K  | Hz   |          |
|                     | Duty Ratio | D <sub>PWM</sub> | 1      | -    | 100  | %    |          |
| D Life Time         |            | TLED             | 30000  | -    | -    | Hrs  | Note 2/3 |

1.  $P_{LED} = VDD \times I_{VDD}$  (Within LED converter transfer efficiency)
2. The life time of LED, 30,000Hrs, is determined as the time at which luminance of the LED is 50% compared to that of initial value at the typical LED current on condition of continuous operating at  $25 \pm 2^{\circ}C$ .
3. Only under the above operating conditions could the life time of LED be guaranteed.



|                     |   |     |                 |
|---------------------|---|-----|-----------------|
|                     |   | REV | ISSUE DATE      |
|                     |   | P   | 2024.01.18      |
| TFT- LCD<br>PRODUCT | SPEC. TITLE<br>ZY121VGXN20C-200 Product Specification |     | PAGE<br>9 OF 27 |

3.4 INPUT TERMINAL PIN ASSIGNMENT

This LCD employs two interface connections, a 20 pin ZIF connector is used for the LCD module electronics interface and a 5 pin ZIF connector is used for the internal backlight system.

3.4.1 Pin assignment for LCD module

Connector : MSB240420HEA or equivalent

< Table7. Pin Assignment for LCD Module Connector >

| Pin No. | Symbol | Description             | I/O |
|---------|--------|-------------------------|-----|
| 1       | VCC    | Power supply            | P   |
| 2       | VCC    | Power supply            | P   |
| 3       | GND    | Ground                  | -   |
| 4       | SEL    | VCC:8Bits; GND/NC:6Bits | I   |
| 5       | RIN0-  | LVDS signal input       | I   |
| 6       | RIN0+  | LVDS signal input       | I   |
| 7       | GND    | Ground                  | -   |
| 8       | RIN1-  | LVDS signal input       | I   |
| 9       | RIN1+  | LVDS signal input       | I   |
| 10      | GND    | Ground                  | -   |
| 11      | RIN2-  | LVDS signal input       | I   |
| 12      | RIN2+  | LVDS signal input       | I   |
| 13      | GND    | Ground                  | -   |
| 14      | CLKIN- | LVDS clock input        | I   |
| 15      | CLKIN+ | LVDS clock input        | I   |
| 16      | GND    | Ground                  | -   |
| 17      | RIN3-  | LVDS signal input       | I   |
| 18      | RIN3+  | LVDS signal input       | I   |
| 19      | NC     | /                       | -   |
| 20      | NC     | /                       | -   |

|                     |   |     |                  |
|---------------------|---|-----|------------------|
|                     |   | REV | ISSUE DATE       |
|                     |   | P   | 2024.01.18       |
| TFT- LCD<br>PRODUCT | SPEC. TITLE<br>ZY121VGXN20C-200 Product Specification |     | PAGE<br>10 OF 27 |

3.4.2 Pin assignment for LED Bar

Connector : MSB24038P5 (STM) or equivalent

< Table8. Pin assignment for LED Bar >

| Pin No | Symbol | Description       | Remarks |
|--------|--------|-------------------|---------|
| 1      | NC     | /                 |         |
| 2      | PWM    | Luminance control |         |
| 3      | EN     | 3.3V-on / 0V-off  |         |
| 4      | GND    | Ground            |         |
| 5      | VLED   | Power supply      | 12V     |

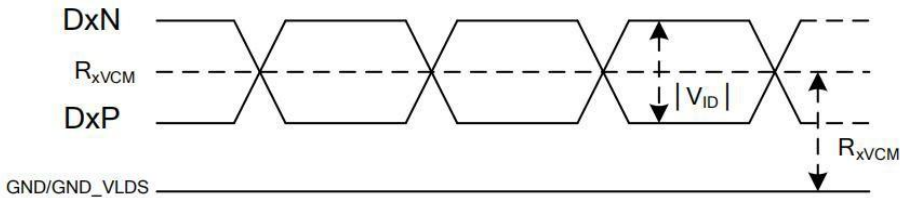
|                     |   |     |                  |
|---------------------|---|-----|------------------|
|                     |   | REV | ISSUE DATE       |
|                     |   | P   | 2024.01.18       |
| TFT- LCD<br>PRODUCT | SPEC. TITLE<br>ZY121VGXN20C-200 Product Specification |     | PAGE<br>11 OF 27 |

3.5.2 DC Specification

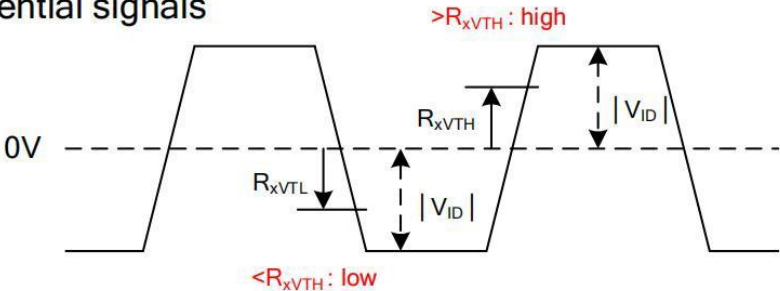
< Table11. DC Specification >

| Parameter                                 | Symbol         | Min  | Typ.  | Max.      | Unit    | Conditions  |
|---|----------------|------|-------|-----------|---------|---|
| Differential input high threshold voltage | $R_{xVTH}$     |      |       | 0.1       | V       | $R_{xVCM} = 1.2V$                                     |
| Differential input low threshold voltage  | $R_{xVTL}$     | -0.1 |       |           | V       |   |
| Input voltage range (singled-end)         | $R_{xVIN}$     | 0    |       | $VDD-1.2$ | V       |   |
| Differential input common mode voltage    | $R_{xVCM}$     | 0.8  | 1.2   | 1.4       | V       |   |
| Differential input voltage                | $ V_{ID} $     | 0.2  | 0.4   | 0.6       | V       |   |
| Differential input leakage current        | $R_{V_{xIIZ}}$ | -10  |       | 10        | $\mu A$ |   |
| Digital Operating Current                 | $I_{VDD}$      |      | (TBD) |           | mA      | FCLK=80 MHz , $V_{15D\_RX}=1.5V$ , Data pattern=FF/H  |
| Digital Stand-by Current                  | $I_{STBD}$     |      | 800   |           | $\mu A$ | RSTB=0 or STBYB=0, Clock & all functions are stopped. |

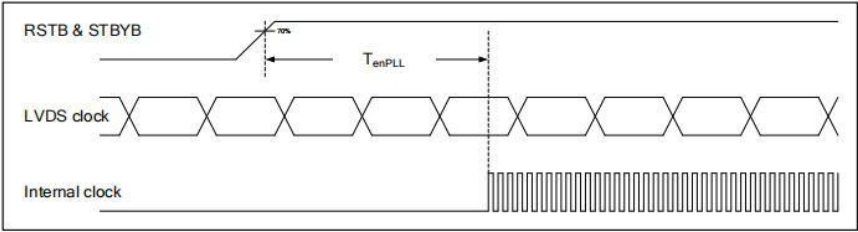
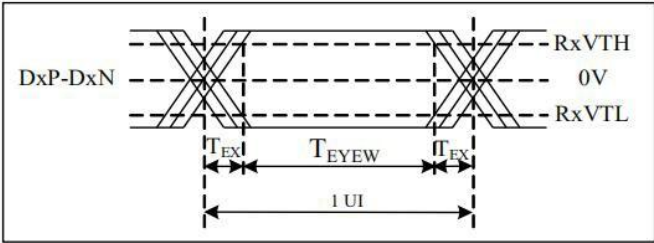
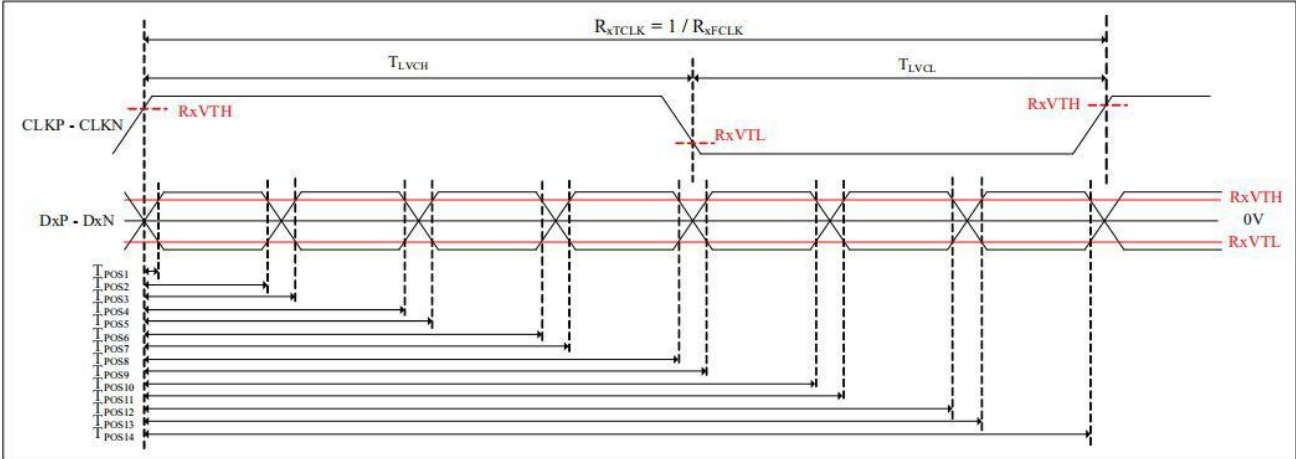
Single end signals



Differential signals



### 3.5.3 AC Specification



- Note:**
- (1)  $T_{BIT}$ : Data period
  - (2) Internal CLK sampling data window

< LVDS channel to channel skew>

|                     |   |     |                  |
|---------------------|---|-----|------------------|
|                     |   | REV | ISSUE DATE       |
|                     |   | P   | 2024.01.18       |
| TFT- LCD<br>PRODUCT | SPEC. TITLE<br>ZY121VGXN20C-200 Product Specification |     | PAGE<br>13 OF 27 |

3.5.3 AC Specification

< Table12. AC Specification >

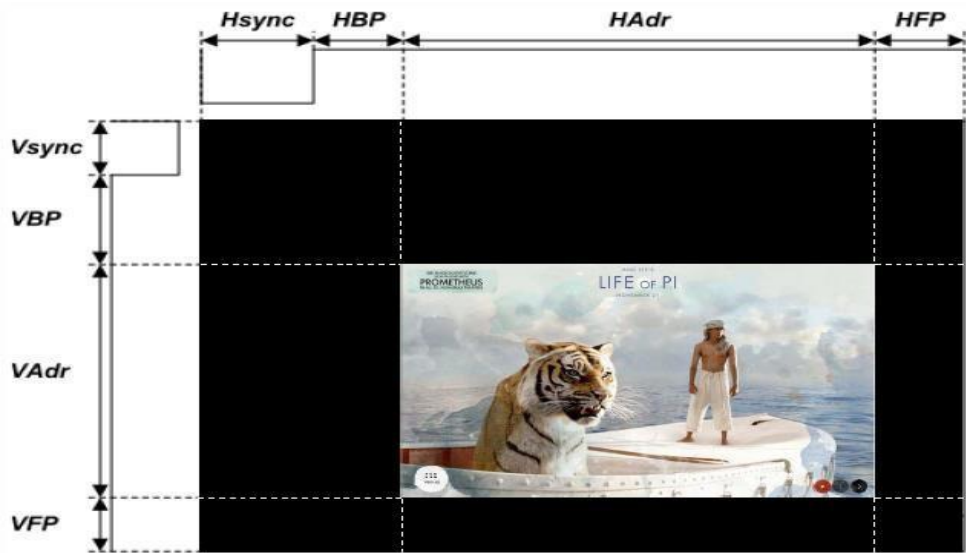
| Parameter        | Symbol              | Min         | Typ. | Max.      | Unit                | Conditions  |
|------------------|---------------------|-------------|------|-----------|---------------------|---|
| Clock Frequency  | R <sub>x</sub> FCLK | 20          |      | 105<br>85 | MHz                 | Max. 105MHz for single port LVDS with one SC5015 panel.<br>Max. 85MHz for dual port LVDS, L&R two port LVDS, single port multi-drop LVDS panel. |
| Clock Period     | R <sub>x</sub> TCLK | 9.5<br>11.8 |      | 50        | ns                  | Min. 9.5ns for single port LVDS with one SC5015 panel.<br>Min. 11.8ns for dual port LVDS, L&R two port LVDS, single port multi-drop LVDS panel. |
| 1 data bit time  | UI                  | -           | 1/7  | -         | R <sub>x</sub> TCLK |   |
| Clock high time  | T <sub>LVCH</sub>   |             | 4    |           | UI                  |   |
| Clock low time   | T <sub>LVCL</sub>   |             | 3    |           | UI                  |   |
| Position 1       | T <sub>POS1</sub>   | -0.25       | 0    | 0.25      | UI                  |   |
| Position 2       | T <sub>POS2</sub>   | 0.75        | -    | 1.25      | UI                  |   |
| Position 3       | T <sub>POS3</sub>   | 0.75        | 1    | 1.25      | UI                  |   |
| Position 4       | T <sub>POS4</sub>   | 1.75        | -    | 2.25      | UI                  |   |
| Position 5       | T <sub>POS5</sub>   | 1.75        | 2    | 2.25      | UI                  |   |
| Position 6       | T <sub>POS6</sub>   | 2.75        | -    | 3.25      | UI                  |   |
| Position 7       | T <sub>POS7</sub>   | 2.75        | 3    | 3.25      | UI                  |   |
| Position 8       | T <sub>POS8</sub>   | 3.75        | -    | 4.25      | UI                  |   |
| Position 9       | T <sub>POS9</sub>   | 3.75        | 4    | 4.25      | UI                  |   |
| Position 10      | T <sub>POS10</sub>  | 4.75        | -    | 5.25      | UI                  |   |
| Position 11      | T <sub>POS11</sub>  | 4.75        | 5    | 5.25      | UI                  |   |
| Position 12      | T <sub>POS12</sub>  | 5.75        | -    | 6.25      | UI                  |   |
| Position 13      | T <sub>POS13</sub>  | 5.75        | 6    | 6.25      | UI                  |   |
| Position 14      | T <sub>POS14</sub>  | 6.75        | -    | 7.25      | UI                  |   |
| Input eye width  | T <sub>EYEW</sub>   | 0.5         | -    | -         | UI                  |   |
| Input eye border | T <sub>EX</sub>     | -           | -    | 0.25      | UI                  |   |
| PLL wake-up time | T <sub>en</sub> PLL |             |      | 150       | us                  |   |

|                     |   |     |                  |
|---------------------|---|-----|------------------|
|                     |   | REV | ISSUE DATE       |
|                     |   | P   | 2024.01.18       |
| TFT- LCD<br>PRODUCT | SPEC. TITLE<br>ZY121VGXN20C-200 Product Specification |     | PAGE<br>14 OF 27 |

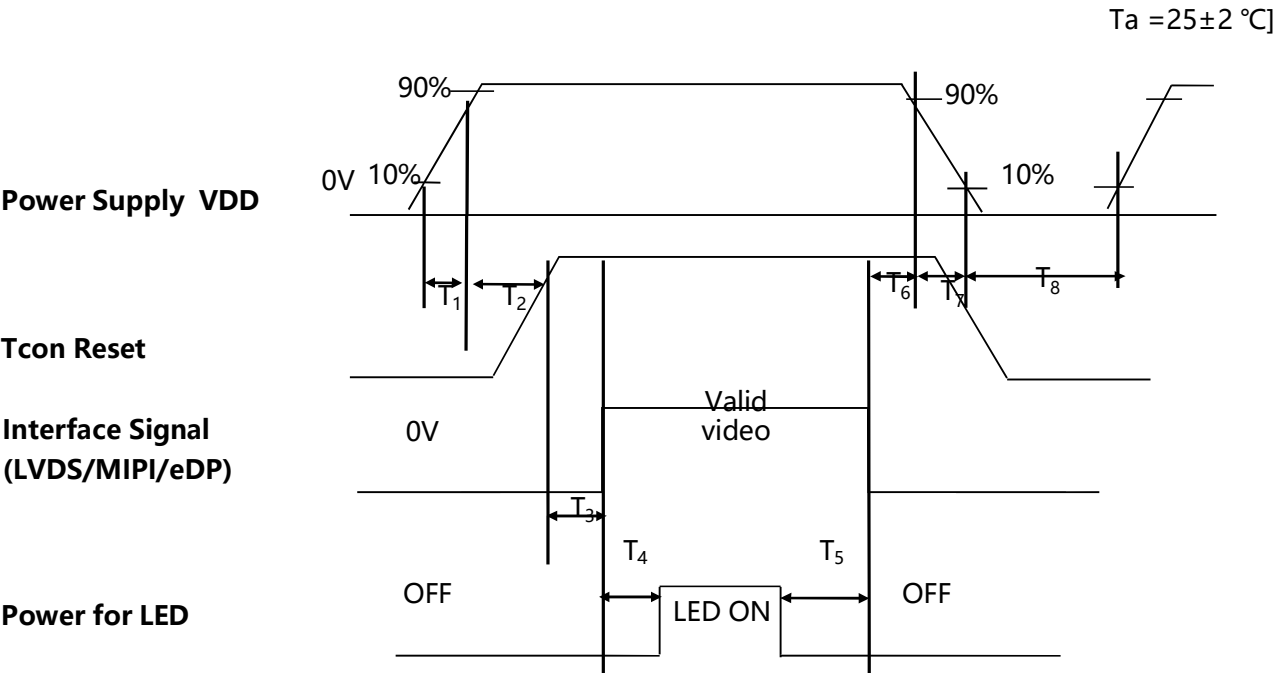
3.6 Interface timing Parameter

< Table13. Timing Parameter >

| Item   |             |                        | Symbol | min  | typ  | max  | UNIT             |
|--------|-------------|------------------------|--------|------|------|------|------------------|
| LCD    | Frame Rate  |                        | -      | -    | 60   | -    | Hz               |
|        | Pixels Rate |                        | -      | 32.5 | 33.0 | 43.8 | MHz              |
| Timing | Horizontal  | Horizontal total time  | tHP    | -    | 860  | 1056 | t <sub>CLK</sub> |
|        |             | Horizontal Active time | tHadr  | 800  |      |      | t <sub>CLK</sub> |
|        |             | Horizontal Back Porch  | tHBP   | -    | 30   | 88   | t <sub>CLK</sub> |
|        |             | Horizontal Front Porch | tHFP   | -    | 30   | 40   | t <sub>CLK</sub> |
|        | Vertical    | Vertical total time    | tvp    | 628  | 640  | 680  | t <sub>H</sub>   |
|        |             | Vertical Active time   | tVadr  | 600  |      |      | t <sub>H</sub>   |
|        |             | Vertical Back Porch    | tVBP   | 18   | 20   | 40   | t <sub>H</sub>   |
|        |             | Vertical Front Porch   | tVFP   | 10   | 20   | 40   | t <sub>H</sub>   |
| Lane   |             |                        |        | -    | 1    | -    | Port             |



3.7 Power Sequence



< Table15. Sequence Table >

| Parameter | Value |      |      | Units |
|-----------|-------|------|------|-------|
|           | Min.  | Typ. | Max. |       |
| T1        | 0.1   | -    | 5    | (ms)  |
| T2        | 1     | -    | 30   | (ms)  |
| T3        | 5     | -    | 100  | (ms)  |
| T4        | 200   | -    | -    | (ms)  |
| T5        | 200   | -    | -    | (ms)  |
| T6        | 0     | -    | 50   | (ms)  |
| T7        | 0     | -    | 10   | (ms)  |
| T8        | 500   | -    | -    | (ms)  |

|                     |   |  |  |     |            |                  |
|---------------------|---|--|--|-----|------------|------------------|
|                     |   |  |  | REV | ISSUE DATE |                  |
|                     |   |  |  | P   | 2024.01.18 |                  |
| TFT- LCD<br>PRODUCT | SPEC. TITLE<br>ZY121VGXN20C-200 Product Specification |  |  |     |            | PAGE<br>16 OF 27 |

4.0 OPTICAL SPECIFICATIONS

4.1 Overview

The test of optical specifications shall be measured in a dark room (ambient luminance  $\leq 1$ lux and temperature =  $25\pm 2^{\circ}\text{C}$ ) with the equipment of Luminance meter system (Gonio meter system and TOPCON BM-5) and test unit shall be located at an approximate distance 50cm from the LCD surface at a viewing angle of  $\theta$  and  $\Phi$  equal to  $0^{\circ}$ . We refer to  $\theta\phi=0$  ( $=\theta 3$ ) as the 3 o' clock direction (the "right"),  $\theta\phi=90$  ( $=\theta 12$ ) as the 12 O' clock direction ("upward"),  $\theta\phi=180$  ( $=\theta 9$ ) as the 9 O' clock direction ("left") and  $\theta\phi=270$  ( $=\theta 6$ ) as the 6 O' clock direction ("bottom"). While scanning  $\theta$  and/or  $\phi$ , the center of the measuring spot on the Display surface shall stay fixed.

4.2 Optical Specifications < Table16. Optical Table>

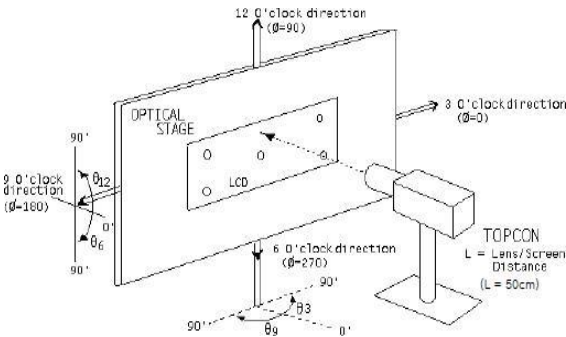
| Item                                      | Symbol      | Condition          |  | Min   | Typ.    | Max   | Unit  | Note   |
|---|-------------|--------------------|--|-------|---------|-------|-------|--------|
| luminance                                 | Bp          | $\theta=0^{\circ}$ |  | 350   | 400     | --    | cd/m2 | Note 1 |
| Brightness Uniformity                     | $\Delta Bp$ |                    |  | 70    | 80      | --    | %     | Note 2 |
| Viewing Angle                             | $\theta_L$  | $Cr\geq 10$        |  | 70    | 80      | --    | deg   | Note 3 |
|   | $\theta_R$  |                    |  | 70    | 80      | --    |       |        |
|   | $\psi_T$    |                    |  | 55    | 65      | --    |       |        |
|   | $\psi_B$    |                    |  | 65    | 75      | --    |       |        |
| Contrast Ratio                            | Cr          | $\theta=0^{\circ}$ |  | 600   | 800     |       | -     | Note 4 |
| Response Time                             | Tr+Tf       | FF=0°              |  | -     | 30      | 35    | ms    | Note 5 |
| Color Coordinate of CIE1931               | Rx          | $\theta=0^{\circ}$ |  | 0.595 | 0.625   | 0.655 | -     | Note 6 |
|   | Ry          |                    |  | 0.298 | 0.328   | 0.358 |       |        |
|   | Gx          |                    |  | 0.295 | 0.325   | 0.355 |       |        |
|   | Gy          |                    |  | 0.597 | 0.627   | 0.657 |       |        |
|   | Bx          |                    |  | 0.087 | 0.117   | 0.147 |       |        |
|   | By          |                    |  | 0.045 | 0.075   | 0.105 |       |        |
|   | Wx          |                    |  | 0.273 | 0.303   | 0.333 |       |        |
|   | Wy          |                    |  | 0.279 | 0.329   | 0.379 |       |        |
| NTSC Ratio                                | NTSC        | CIE1931            |  | 50    | 55      | --    | %     | Note 7 |
| Polarization Direction of Front Polarizer | PdF         |                    |  |       | 45°     |       | deg   | Note 8 |
| Polarization Direction of Rear Polarizer  | PdR         |                    |  |       | 45°     |       | Deg   |        |
| Gray inversion angle                      |             |                    |  |       | 6'CLOCK |       |       | Note 9 |



|                     |   |                  |            |
|---------------------|---|------------------|------------|
|                     |   | REV              | ISSUE DATE |
|                     |   | P                | 2024.01.18 |
| TFT- LCD<br>PRODUCT | SPEC. TITLE<br>ZY121VGXN20C-200 Product Specification | PAGE<br>17 OF 27 |            |

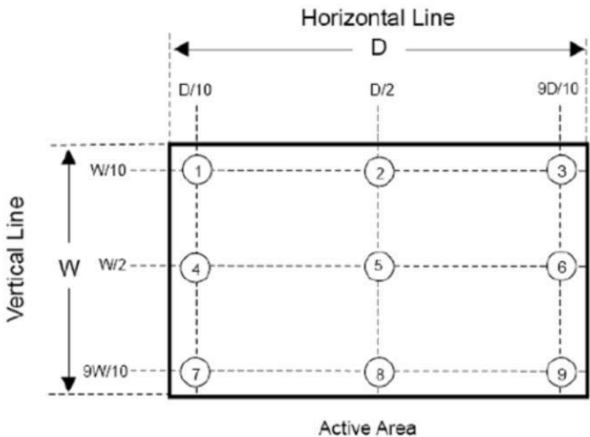
**Note1:Luminance measurement**

- The test condition is at ILED=150mA and measured on the surface of LCD module at 25°C.
- The data are measured after LEDs are lighted on for more than 5 minutes and LCM displays are fully white. The brightness is the center of the LCD. Measurement equipment CS2000 or similar equipments (Field of view:1deg,Distance:50cm)
  - Measuring surroundings: Dark room.
  - Measuring temperature: Ta=25°C.
  - Adjust operating voltage to get optimum contrast at the center of the display.
  - Measured value at the center point of LCD panel must be after more than 5 minutes while backlight turning on.



**Note2:Uniformity**

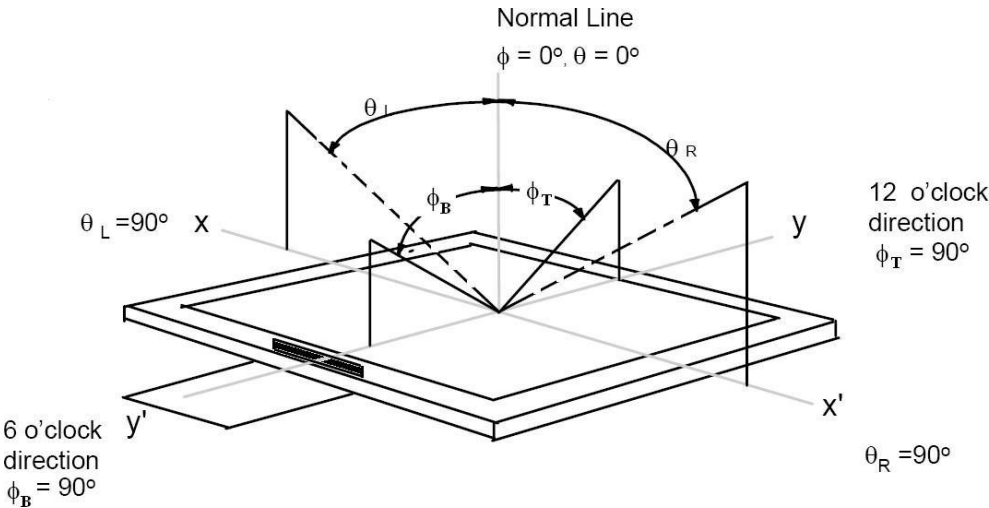
- The test condition is at ILED=150mA and measured on the surface of LCD module at 25°C.
- Measurement equipment:CS2000 or similar equipments
- The luminance uniformity is calculated by using following formula:
- $\Delta Bp = Bp \text{ (Min.)} / Bp \text{ (Max.)} \times 100 \text{ (\%)}$
- Bp (Max.) = Maximum brightness in 9 measured spots
- Bp (Min.) = Minimum brightness in 9 measured spots.



|                     |   |     |                  |
|---------------------|---|-----|------------------|
|                     |   | REV | ISSUE DATE       |
|                     |   | P   | 2024.01.18       |
| TFT- LCD<br>PRODUCT | SPEC. TITLE<br>ZY121VGXN20C-200 Product Specification |     | PAGE<br>18 OF 27 |

**Note 3:The definition of Viewing Angle**

Refer to the graph below marked by  $\theta$  and  $\Phi$ .



**Note4:The definition of Contrast Ratio** (Test LCM using CS2000 or similar equipments):

Contrast Ratio(CR)=

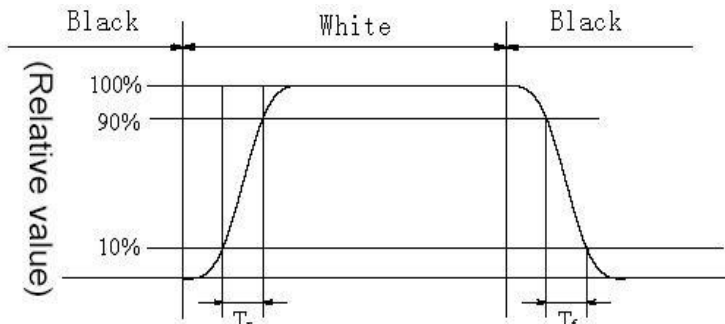
Luminance When LCD is at "White" state

Luminance When LCD is at "Black" state

(Contrast Ratio is measured in optimum common electrode voltage)

**Note5:Definition of Response time.**(Test LCD using DMS501 or similar equipments):

The output sign also photo detector are measured when the input sign also are changed from "black " to "white" (Voltage falling time)and from "white" to "black" (Voltage rising time), respectively . The response time is defined as the time interval between the 10% and 90% of amplitudes . Refer to fi gures below.



|    |       |       |       |       |       |       |       |       |
|----|-------|-------|-------|-------|-------|-------|-------|-------|
|    | L0    | L1    | L2    | L3    | L4    | L5    | L6    | L7    |
| L0 | Black |       |       |       |       |       |       |       |
| L1 |       | Black |       |       |       |       |       |       |
| L2 |       |       | Black |       |       |       |       |       |
| L3 |       |       |       | Black |       |       |       |       |
| L4 |       |       |       |       | Black |       |       |       |
| L5 |       |       |       |       |       | Black |       |       |
| L6 |       |       |       |       |       |       | Black |       |
| L7 |       |       |       |       |       |       |       | Black |

Response time of gray to gray:  
Measurement equipment: DMS501 or similar equipments.

Test method: we define 8 grays L0-L7,the grays of L0-L7 were defined as:0,36,73, 109, 146, 182, 219, 255. The output signals of photodetector are measured when the input signals are rechanged from "Lx" to "Ly" , x, y= [0, 7]. The response time is defined as the time interval between the 10% and 90% of amplitudes. The result of the test can be noted as below:

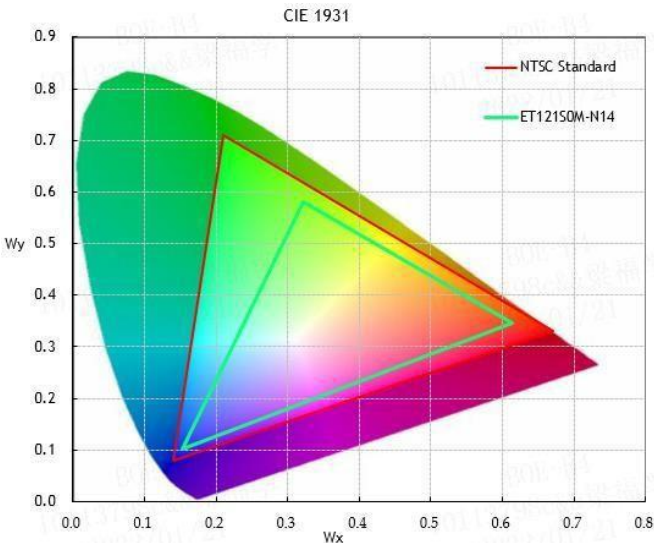
|                     |   |     |                  |
|---------------------|---|-----|------------------|
|                     |   | REV | ISSUE DATE       |
|                     |   | P   | 2024.01.18       |
| TFT- LCD<br>PRODUCT | SPEC. TITLE<br>ZY121VGXN20C-200 Product Specification |     | PAGE<br>19 OF 27 |

**Note 6: Color Coordinates of CIE 1931**

The test condition is at ILED=120mA and measured on the surface of LCD module at 25°C.  
Measurement equipment:CS2000 or similar equipments  
The Color Coordinate (CIE 1931) is the measurement of the center of the display shown in below figure.

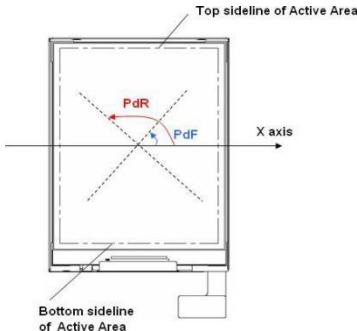
**Note 7: Definition of Color of CIE Coordinate and NTSC Ratio.**

$$S = \frac{\text{area of RGB triangle}}{\text{area of NTSC triangle}} \times 100\%$$



**Note 8: Polarization Direction Definition**

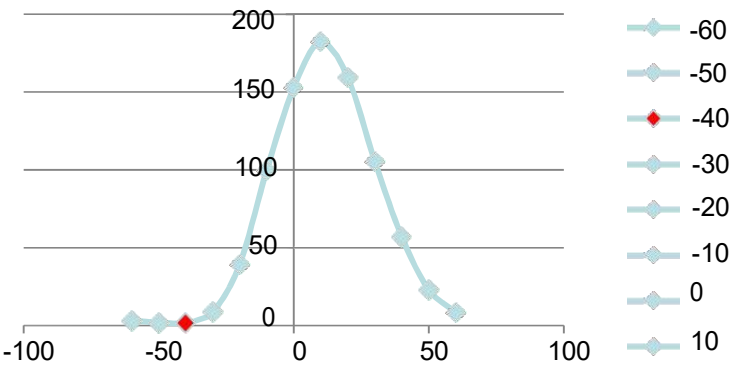
- Viewing direction is normal user viewing direction which is vertical to the display surface
- The polarizer which is closer to viewer is defined as Front Polarizer
- The polarizer which is on the rear side of viewer is defined as Rear Polarizer
- The X axis is defined as parallel line to top & bottom sidelines of the Active Area
- PdF which is marked in blue arrow is polarization degree of Front polarizer
- PdB which is marked in red arrow is polarization degree of Back polarizer
- The polarization degree parameter must be indicated in range of 0deg to 180deg according to above definition



|                     |   |     |                  |
|---------------------|---|-----|------------------|
|                     |   | REV | ISSUE DATE       |
|                     |   | P   | 2024.01.18       |
| TFT- LCD<br>PRODUCT | SPEC. TITLE<br>ZY121VGXN20C-200 Product Specification |     | PAGE<br>20 OF 27 |

**Note 9: Definition of gray inversion angle**

- Refer to the graph of note 9.
- Using luminance test method.
- Test pattern : 128 gray
- If the viewing direction is 12 o’ clock ,then test the luminance while  $\theta=-60^{\circ},\theta=-50^{\circ},\theta=-40^{\circ},\theta=-30^{\circ},\theta=-20^{\circ},\theta=-10^{\circ},\theta=0^{\circ},\theta=10^{\circ},\theta=20^{\circ},\theta=30^{\circ},\theta=40^{\circ},\theta=-50^{\circ},\theta=60^{\circ}$ . The luminance test as figure below:



|                     |   |     |                 |
|---------------------|---|-----|-----------------|
|                     |   | REV | ISSUE DATE      |
|                     |   | P   | 2024.01.18      |
| TFT- LCD<br>PRODUCT | SPEC. TITLE<br>ZY121VGXN20C-200 Product Specification |     | PAGE<br>21 OF27 |

5.0 RELIABILITY TEST

The Reliability test items and its conditions are shown in below.

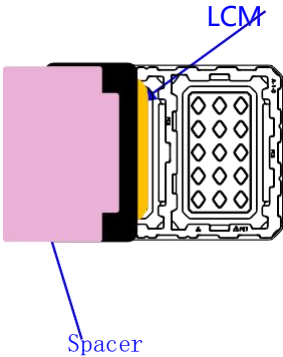
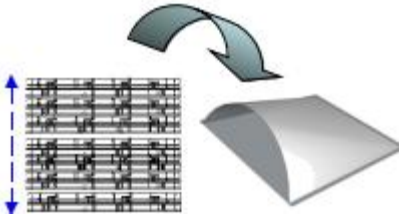
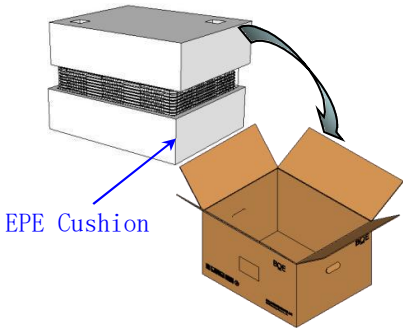



<Table 17. Reliability Test Parameters >

| No | Test Items   | Conditions                             |
|----|--|--|
| 1  | High temperature storage test                        | 80℃, 240hr                             |
| 2  | Low temperature storage test                         | -30℃, 240hr                            |
| 3  | High temperature & high humidity<br>(operation test) | 60℃, 90%RH, 240hr                      |
| 4  | Low temperature operation test                       | -20℃, 240hr                            |
| 5  | High temperature operation test                      | 70℃, 240hr                             |
| 6  | Thermal Shock Test                                   | -30℃~70℃, 1hr/cycle, 100cycle          |
| 7  | ALT  | -10℃~65℃, 0%~93%, 24hr/cycle, 10 cycle |
| 8  | ESD  | 150pF, 330Ω, ±6kV(Contact), ±8kV (Air) |
| 9  | Packing VIB  | 1.47G, 1-200hz, X, Y, ±Z, 30min/Axis   |
|    |  |  |

Remark : Vertical line appear when the temperature is below 10℃

|                     |   |     |                  |
|---------------------|---|-----|------------------|
|                     |   | REV | ISSUE DATE       |
|                     |   | P   | 2024.01.18       |
| TFT- LCD<br>PRODUCT | SPEC. TITLE<br>ZY121VGXN20C-200 Product Specification |     | PAGE<br>22 OF 27 |

6.0 PACKING INFORMATION(产品形态： LCM )

|   |   |   |
|---|---|---|
| Packing procedure:  |   |   |
| 将LCM 产品放入托盘产品槽，液晶显示屏表面朝上，将珍珠棉垫片放入托盘顶部   | 将10托盘产品交错叠放，将1个空托盘放在顶部，放入PE袋,抽真空中   | 将一袋托盘产品平放入箱内，上下放置EPE坐垫  |
| 2 pcs LCM/2pcs<br>Spacer/Tray   | 20 pcs LCM/11 Tray/Bag  | 2 pcs EPE Cushion/Box<br>20pcs FOB/Box  |
| <br>Step 1   | <br>Step 2   | <br>Step 3   |
| 产品箱采用“一”字形密封起来的，并在指定位置贴标签   | 每个托盘上放置4层箱，每层按放置4个箱，标签朝外放置，捆绑带按“井”字捆绑。在托盘外缠绕至少3层拉伸膜包裹   | 汽车装车方式：两个水平双排双层堆放汽车装车能力   |
| 16pcs Box/Pallet, 3 2 0 pcs LCM/Pallet  |   |   |
| <br>Step 4 | <br>Step 5 | <br>Step 6 |

6.1 Packing Note(产品形态： LCM)

- Box Dimension: 607mm(W) x 507mm(D) x 240mm(H)
- Package Quantity in one Box: 20pcs

|                     |   |     |                  |
|---------------------|---|-----|------------------|
|                     |   | REV | ISSUE DATE       |
|                     |   | P   | 2024.01.18       |
| TFT- LCD<br>PRODUCT | SPEC. TITLE<br>ZY121VGXN20C-200 Product Specification |     | PAGE<br>23 OF 27 |

7.0 Handling & Cautions

7.1 Mounting Method

- The panel of the LCD consists of two thin glasses with polarizers which easily get damaged. So extreme care should be taken when handling the LCD.
- Excessive stress or pressure on the glass of the LCD should be avoided. Care must be taken to insure that no torsional or compressive forces are applied to the LCD unit when it is mounted.
- If the customer's set presses the main parts of the LCD, the LCD may show the abnormal display. But this phenomenon does not mean the malfunction of the LCD and should be pressed by the way of mutual agreement.
- To determine the optimum mounting angle, refer to the viewing angle range in the specification for each model.
- Mount a LCD module with the specified mounting parts.

7.2 Caution of LCD Handling and Cleaning

- Since the LCD is made of glass, do not apply strong mechanical impact or static load onto it. Handling with care since shock, vibration, and careless handling may seriously affect the product. If it falls from a high place or receives a strong shock, the glass may be broken.
- The polarizers on the surface of panel are made from organic substances. Be very
- careful for chemicals not to touch the polarizers or it leads the polarizers to be deteriorated.
- If the use of a chemical is unavoidable, use soft cloth with solvent (recommended below) to clean the LCD's surface with wipe lightly.
- -IPA(Isopropyl Alcohol), Ethyl Alcohol, Trichlorotrifluoroethane
- Do not wipe the LCD's surface with dry or hard materials that will damage the polarizers and others. Do not use the following solvent.
- -Water, Ketone, Aromatics
- It is recommended that the LCD be handled with soft gloves during assembly, etc. The polarizers on the LCD's surface are vulnerable to scratch and thus to be damaged by sharp particles.
- Do not drop water or any chemicals onto the LCD's surface.
- A protective film is supplied on the LCD and should be left in place until the LCD is required for operation.
-

|                     |   |     |                  |
|---------------------|---|-----|------------------|
|                     |   | REV | ISSUE DATE       |
|                     |   | P   | 2024.01.18       |
| TFT- LCD<br>PRODUCT | SPEC. TITLE<br>ZY121VGXN20C-200 Product Specification |     | PAGE<br>24 OF 27 |

7.3 Caution Against Static Charge

- The LCD modules use C-MOS LSI drivers, so customers are recommended that any unused input terminal would be connected to Vdd or Vss, do not input any signals before
- power is turn on, and ground you body, work/assembly area, assembly equipments to protect against static electricity.
- Remove the protective film slowly, keeping the removing direction approximate
- 30-degree not vertical from panel surface, If possible, under ESD control device like
- ion blower, and the humidity of working room should be kept over 50%RH to reduce the risk of static charge.
- Avoid the use work clothing made of synthetic fibers. We recommend cotton clothing or other conductivity-treated fibers.
- In handling the LCD, wear non-charged material gloves. And the conducting wrist to the earth and the conducting shoes to the earth are necessary.

7.4 Caution For operation

- It is indispensable to drive the LCD within the specified voltage limit since the higher Voltage than the limit causes the shorter LCD's life. An electro-chemical reaction due to DC causes undesirable deterioration of the LCD so that the use of DC drive should avoid.
- Do not connect or disconnect the LCD to or from the system when power is on.
- Never use the LCD under abnormal conditions of high temperature and high humidity.
- When expose to drastic fluctuation of temperature (hot to cold or cold to hot) ,the
- LCD may be affected; Specifically, drastic temperature fluctuation from cold to hot ,produces dew on the LCD's surface which may affect the operation of the polarizer and the LCD.
- Response time will be extremely delayed at lower temperature than the operating temperature range and on the other hand at higher temperature LCD may turn black at temperature above its operational range. However those phenomena do not mean malfunction or out of order with the LCD. The LCD will revert to normal operation once the temperature returns to the recommended temperature range for normal operation.
- Do not display the fixed pattern for a long time because it may develop image sticking due to the LCD structure. If the screen is displayed with fixed pattern, use a screen saver.



|                     |   |     |                  |
|---------------------|---|-----|------------------|
|                     |   | REV | ISSUE DATE       |
|                     |   | P   | 2024.01.18       |
| TFT- LCD<br>PRODUCT | SPEC. TITLE<br>ZY121VGXN20C-200 Product Specification |     | PAGE<br>25 OF 27 |

7.5 Packaging

- Modules use LCD element, and must be treated as such.
- -Avoid intense shock and falls from a height.
- -To prevent modules from degradation, do not operate or store them exposed directl to sunshine or high temperature/humidity for long periods.

7.6 Storage

- A slight dew depositing on terminals is a cause for electro-chemical reaction resulting in terminal open circuit. Relative humidity of the environment should therefore bekept below 60%RH.
- Original protective film should be used on LCD’ s surface (polarizer). Adhesive type protective film should be avoided, because it may change color and/or propertiesof the polarizers.
- Do not store the LCD near organic solvents or corrosive gasses.
- Keep the LCD safe from vibration, shock and pressure.
- Black or white air-bubbles may be produced if the LCD is stored for long time in the lower temperature or mechanical shocks are applied onto the LCD.
- In the case of storing for a long period of time for the purpose or replacement use, the following ways are recommended.
- -Store in a polyethylene bag with sealed so as not to enter fresh air outside in it.
- -Store in a dark place where neither exposure to direct sunlight nor light is.
- -Keep temperature in the specified storage temperature range.
- -Store with no touch on polarizer surface by the anything else. If possible, store the LCD in the packaging situation LCD when it was delivered.

7.7 Safety

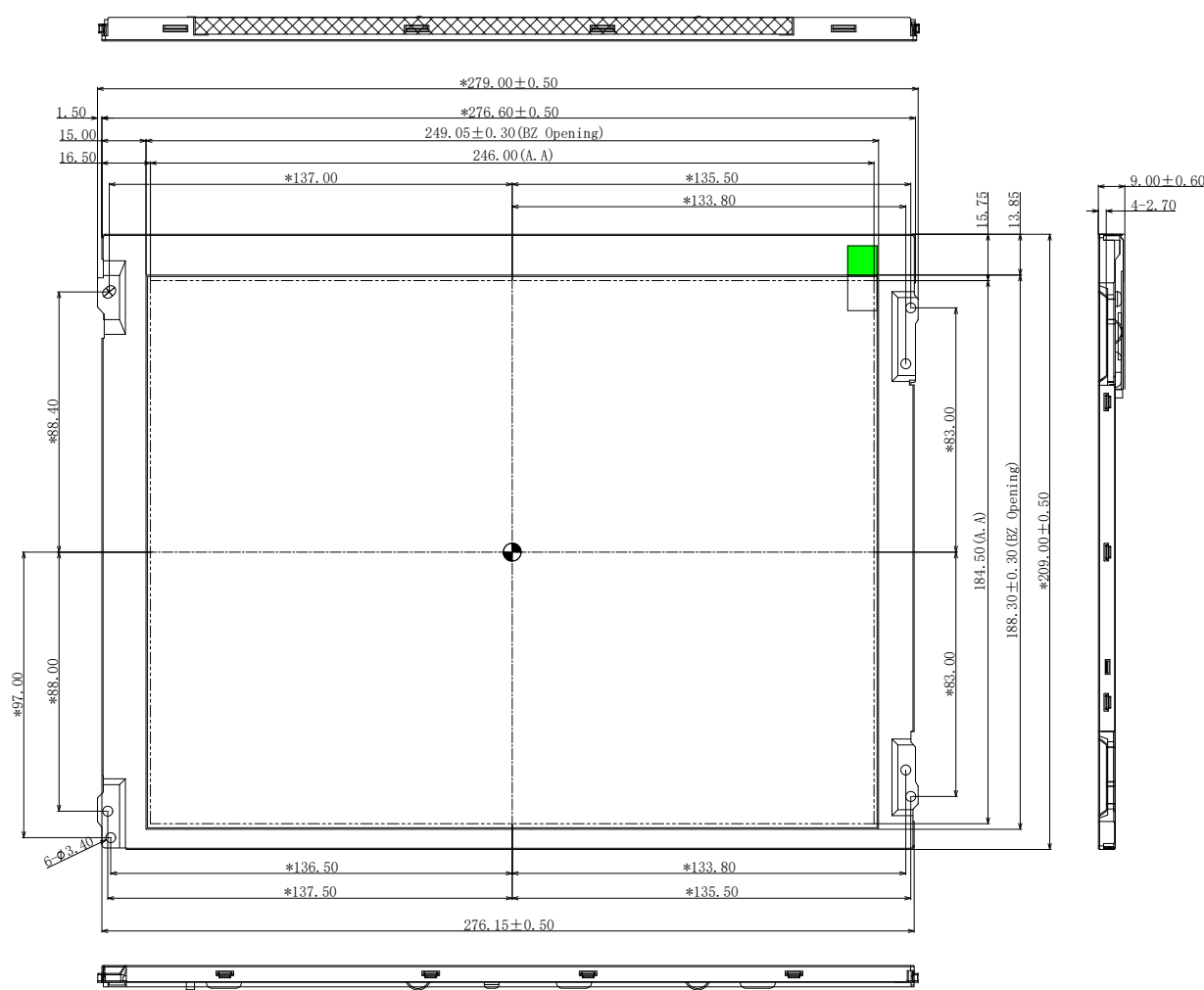
- For the crash damaged or unnecessary LCD, it is recommended to wash off liquidcrystal by either of solvents such as acetone and ethanol an should be burned up later.
- In the case the LCD is broken, watch out whether liquid crystal leaks out or not. Ifyour hands touch the liquid crystal, wash your hands cleanly with water an soap assoon as possible.
- If you should swallow the liquid crystal, first, wash your mouth thoroughly withwater, then drink a lot of water and induce vomiting, and then, consult a physician.in your eyes, flush your eyes with running water forat least fifteen minutes.

|                     |   |     |                  |
|---------------------|---|-----|------------------|
|                     |   | REV | ISSUE DATE       |
|                     |   | P   | 2024.01.18       |
| TFT- LCD<br>PRODUCT | SPEC. TITLE<br>ZY121VGXN20C-200 Product Specification |     | PAGE<br>26 OF 27 |

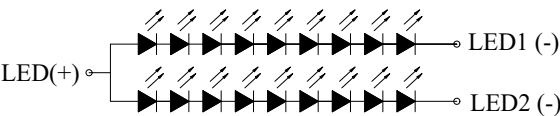
8.0 Mechanical Specification

Mechanical Drawing

Drawing Attachment: Front



LED 电路图:9串X2并=18LED  
IF:60mA\*2=120mA  
VF:3.0V\*9=27V TYP



|                     |   |     |                  |
|---------------------|---|-----|------------------|
|                     |   | REV | ISSUE DATE       |
|                     |   | P   | 2024.01.18       |
| TFT- LCD<br>PRODUCT | SPEC. TITLE<br>ZY121VGXN20C-200 Product Specification |     | PAGE<br>27 OF 27 |

Mechanical Drawing

Drawing Attachment: BACK

